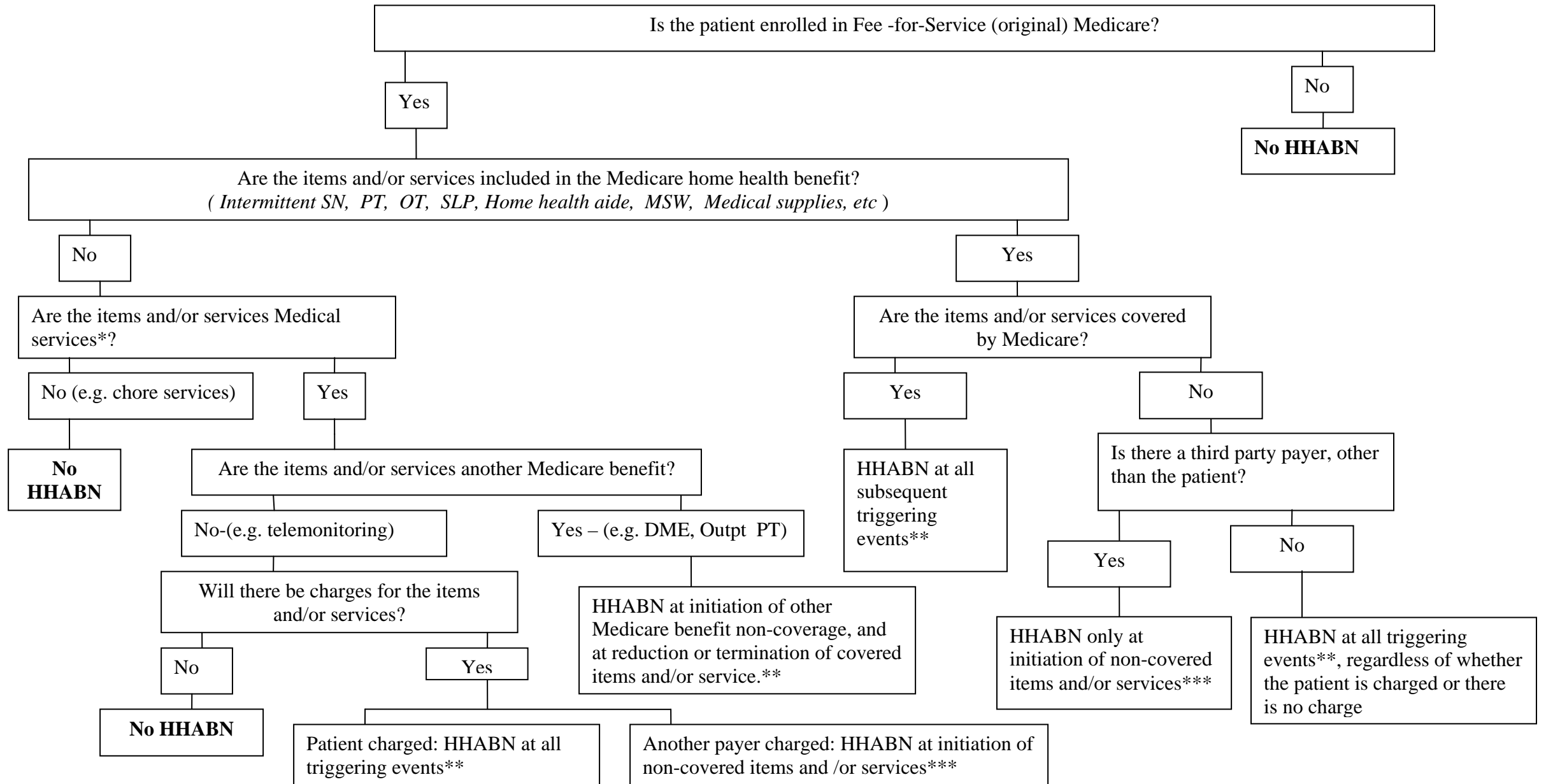


HOME HEALTH AGENCY HHABN DECISION TREE



- *Medical services - any hands-on service, personal care, cueing ,or activity that is any way involved in monitoring the patient's health
- *Non-Medical services - include chore services, companion services, household maintenance and repair services, lawn and tree services, and clearing walkways.
- **Triggering events – Initiation of non-covered items and/or services; Reductions of some covered or non-covered care while continuing other care; Termination of all Medicare covered care, but expects to continue delivering other non-covered care (an Expedited Determination Notice is to be given when all Medicare covered care is ending).
- *** Renew HHABN annually